

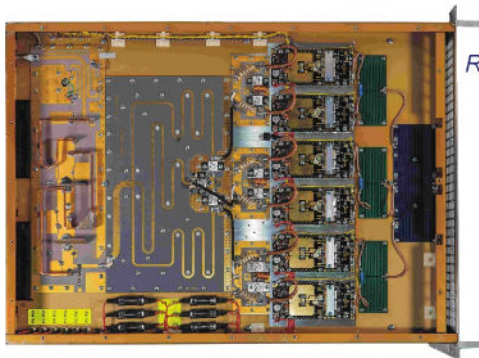
Following the legendary line of FM transmitters ESVA, of which were built over 12,000 pieces, Suono Telecom now, continuing the tradition, introduce the new ESVB line, the best in our long 40 years of history of manufacturing Radio FM products. In addition to the well-known quality and reliability, this new line has those features and functions considered indispensable in today's high class equipments, such as top energy efficiency, telemetry LAN, IP connection and N+1 configuration.

**KEY FEATURES**

- Excellent audio performance
- Compact size in relation to the RF power
- Low power consumption
- Last generation of RF power devices
- Frontplane control and metering via HD Oled Display
- Parameters setting by only one rotary knob
- Quick and easy to use and immediate learning menu
- IP Connectivity for anywhere access
- Quick and easy routine maintenance
- High quality Stereocoder
- RDS Coder
- Telemetry via IP



slide-in power supply for easy maintenance



RF Power



Rear side

**GENERAL**

Power Output:.....from 0 to 5000W continuously adjustable from front panel.  
 Frequency Range:.....87.5+108.00 MHz, [ 66+74 MHz (OIRT), 76+90 MHz (JPN)]  
 Type of Modulation:.....Direct frequency modulation of carrier, F3E stereo and mono.  
 RF Output Impedance:.....50 ohm.  
 RF Output Connector: .....7/8"  
 RF Output setting:.....10W step  
 VSWR: .....1.5:1 Max with automatic fold-back VSWR prot. at all phase angles  
 Frequency Stability: .....Internal TCXO ±2 ppm from -5 to +50°C (better on request)  
 Modulation Capability:.....over ±200 KHz  
 Audio Inputs: .....L&R analog balanced, Unbalanced composite, SCA, RDS  
 Operator interface setting:.....Encoder Push-Rotary Selector  
 LCD Display:.....Oled hi-definition graphic type  
 Frequency Control: .....Synthesizer upprocessor controlled.  
 Programming step:.....10 KHz increments  
 Interface control:.....N°2 RS485 ports RJ45 back panel  
 PC Interface: USB: .....connector Type B female front panel  
 Telemetry:.....RJ45 LAN connection with WEB-Server  
 Monitor RF:.....-10 dBm, BNC-F connector  
 Off Lock RF Muting: .....< -80 dBc.  
 RF Harmonics: .....Exceeds ETSI/CCIR/FCC requirements (< -75dBc)  
 RF Spurious: .....Exceeds ETSI/CCIR/FCC requirements (< -90dBc)  
 Preemphasis: .....Flat/50/75µs selectable from front panel.  
 Asynchronous AM S/N Ratio:.....-65 dB below ref.100% AM modulation @ 400 Hz.  
 Synchronous AM S/N Ratio: .....-60 dB below ref. 100% AM mod. 400 Hz with FM 100%  
 AC Power Factor:.....0.95 typical at 220VAC  
 Operating temperature: .....-10°C to +50°C (32°F to 122°F)  
 Max Operating Altitude: .....> 3500 mt.  
 Relative Humidity Range: .....0 to 95% non condensing.

**MONAURAL FEATURES**

Operational Modes: .....Mono (L+R)  
 Input Impedance: .....600 ohm or 10 Kohms balanced.  
 Input Level: .....-6 to +12 dBm in 0,5dB step (Other range on request)  
 Input Connector:.....XLR female - balanced.  
 Audio Frequency Response:.....±0.15 dB, 30 Hz to 15 KHz.  
 Preemphasis setting:.....0, 50µS, 75µS  
 Audio Filter Attenuation:.....< -55 dB @ 19 KHz, < -50 dB 20 KHz to 100 KHz  
 TH Distortion + Noise:.....< 0.05% @ 400 Hz  
 FM S/N Ratio:.....better than -80 dB RMS ref. ±75 KHz 50µs deemphasis.

**MULTIPLEX FEATURES**

Composite Input Impedance:.....600 ohm or 10 Kohms balanced.  
 Composite Input Level:.....-12 to +6 dBm in 0,5dB step (Other range on request)  
 Input Connector:.....BNC female  
 AES/EBU Input Connector:.....BNC female  
 Composite Response:.....±0.2 dB, 30 Hz to 100 KHz.  
 THDistortion + Noise:.....0.05% @ 400 Hz  
 Intermodulation Distortion:.....0.05%, 1 KHz/1.3 KHz, 1:1 ratio  
 FM S/N Ratio:.....better than -80 dB RMS ref. ±75 KHz 50 µs de-emph. decoded.

**STEREO CODER FEATURES**

Audio Input Impedance:.....600 ohm balanced, 15 Kohm unbalanced.  
 Audio Input Level:.....-6 to +6 dBm in 0,5dB step (Other range on request)  
 Input Connector:.....XLR female.  
 Audio Frequency Response:.....±0.15 dB, 30 Hz to 15 KHz.  
 Preemphasis setting:.....0, 50µS, 75µS  
 THDistortion + Noise:.....0.05% @ 400 Hz  
 Intermodulation Distortion:.....0.05%, 1 KHz/1.3 KHz, 1:1 ratio  
 FM S/N Ratio:.....-80 dB RMS at ±75 KHz 50 µs de-emphasis.  
 Pilot Frequency: .....19 KHz ± 1 Hz  
 38 KHz Suppression:.....-60 dB (typ. -70 dB)  
 Audio Filter Attenuation:.....< -55 dB @ 19 KHz, < -50 dB 20 KHz to 100 KHz  
 Stereo Separation:.....30+100 Hz = -50 dB, 100Hz+15 KHz = -60 dB  
 Crosstalk attenuation:.....Main to Sub -50 dB 30 Hz to 15 KHz below 100% Mod.

**SCA-RDS 1&2 SPEC.**

Input Level:.....-6 to +6 dBm in 0,5dB step (Other range on request)  
 Impedance:.....10k ohms unbalanced  
 Connector:.....BNC female  
 Amplitude Response:.....+/- 0.1dB; 53Hz to 100kHz

**MECHANICAL/PHYSICAL**

Height: ..... 221 mm (5HE )  
 Width: ..... 19" (48.3 cm) EIA Rack Mount  
 Depth: ..... 23" (605 cm) with connectors  
 Weight:..... 36 kg 78 lbs unpacked

Models: **-S** (Stereocoder built-in) **-RDS** (RDS Coder built-in) **-LAN** (Ethernet connection)